



PACK CONTENTS:

- Face-fit Framing [Top, Bottom, Left, Right]
- Top Channels (Front & Back)
- Screws (Assembly, Fixing, Top Channel)
- Hinge Pins
- White Cover Stickers
- Sliding Shutter Panels

WHAT YOU WILL NEED:

- Drill
- Drill Bit Suitable for Timber (3mm required)
- Screw Tip Bit
(PH2 x 150mm Phillips Head Bit Required)



STEP 1

Unpack Framing Box

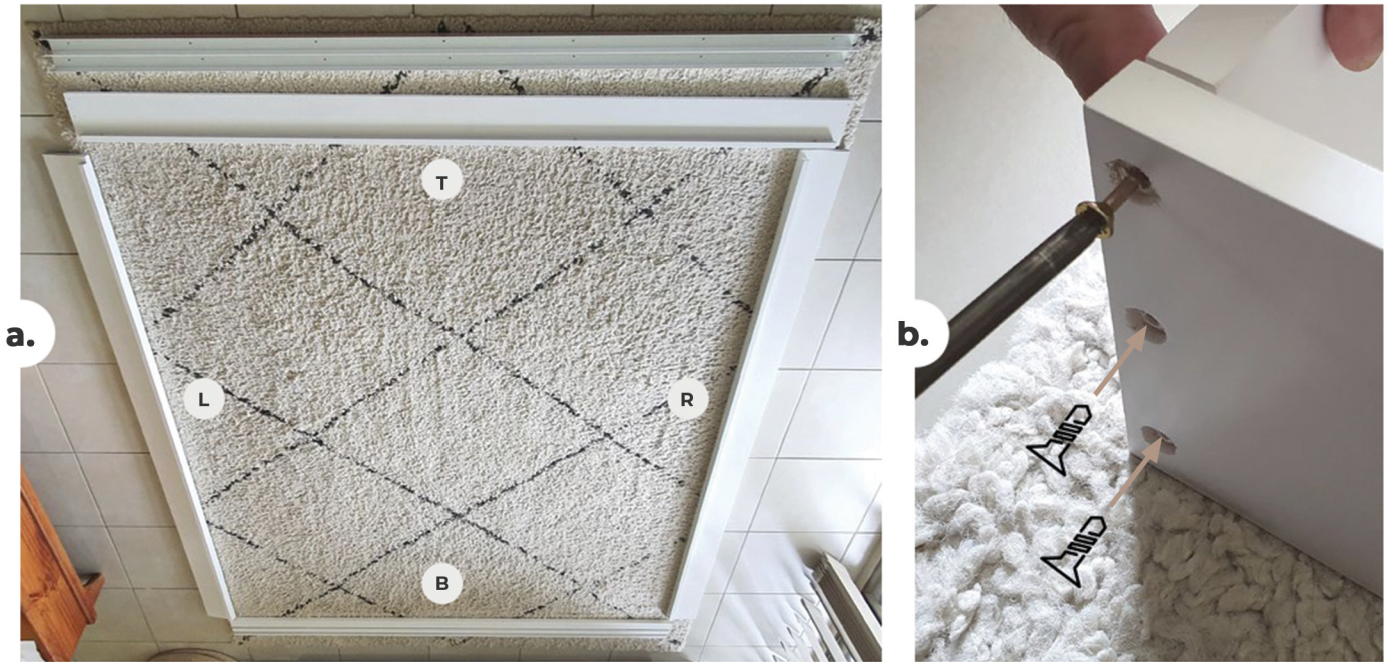
- Locate Hardware and remove from Pack
- Group different pack items together



STEP 2

Assemble Outer Frame

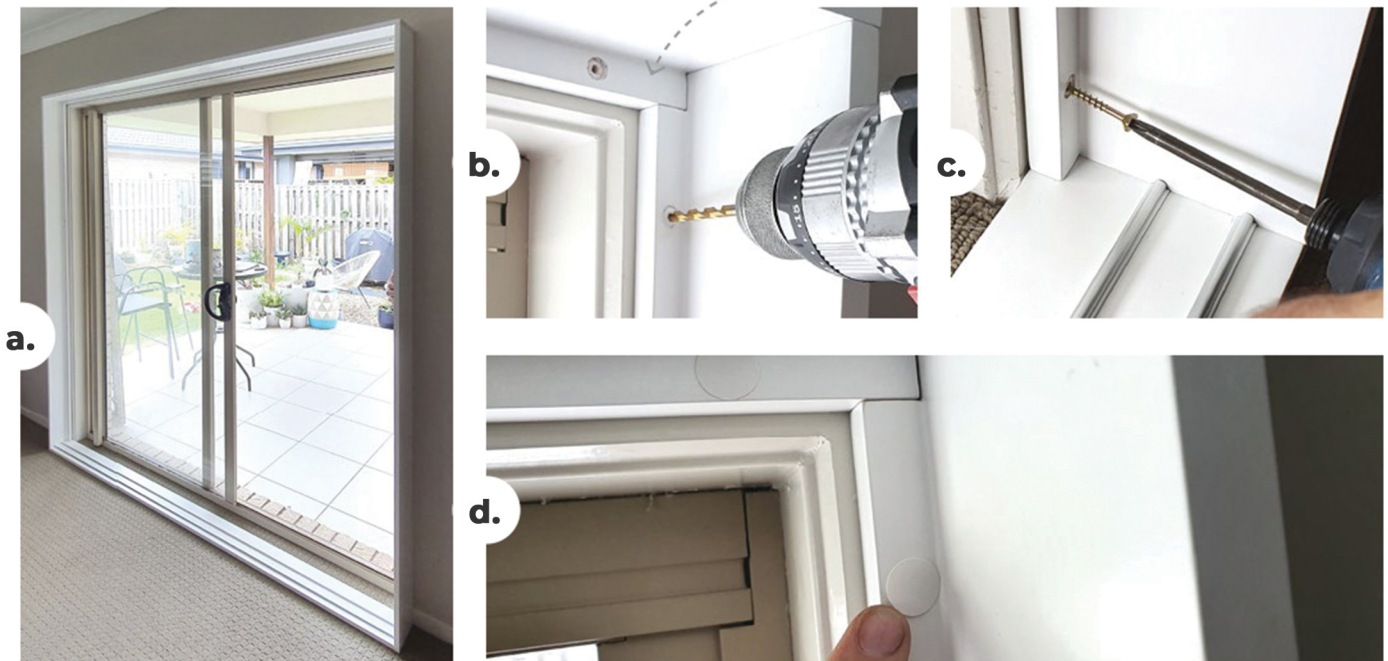
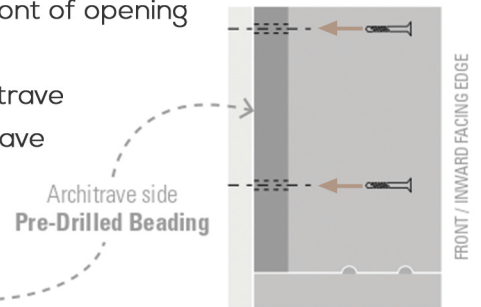
- Layout frames into position using stickers as indicated
 - Screw all corners together with (Size mm??) screws
- NOTE: Assemble in room where slider is to be installed



STEP 3

Install Frame

- Place (pre-drilled beading side) frame in front of opening against surface to which it be attached to
 - Make sure edges are square to wall/architrave
- Drill pilot holes through beading into architrave using 3mm drill bit
- Fasten with (size mm??) screws supplied
- Place white covers over screw heads



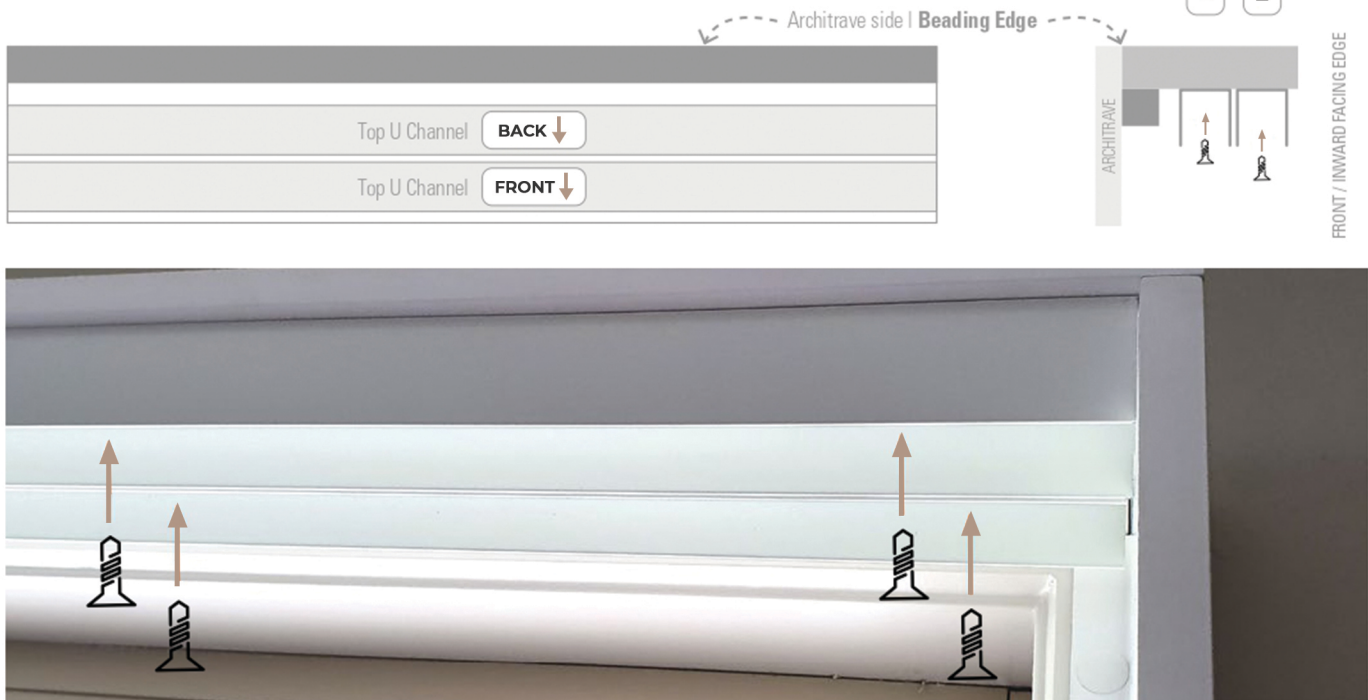
STEP 4

Fit Top Channels

a. Position channels over pre-drilled holes

NOTE: Channels are labelled for positioning & front edge direction to face

b. Secure top channels into place with small screws supplied



STEP 5

Fit Shutters Rear Panels

Working from the back channel left to right

- While holding the shutter panel securely, guide top edge of shutter panel into top track, followed by placing bottom roller wheels onto bottom tracks
- Repeat for second 'joining' panel making sure hinges pair
- With panel(s) in place, join panels together using hinge pins on outward facing side of panels



STEP 6

Fit Shutters Front Panels

Working with the front channel left to right with blades in closed position

a. Repeat steps 5.a, b, c



STEP 7

Make Adjustments & Place White Hole Covers

a. First, with all blades in closed position check for smooth sliding operation of all panels

b. Panel edges should meet square against outer frame.

- If not, make adjustments to wheel heights (back of panel) using phillips head driver until the shutter panel is square against frame

c. Place white covers over screw holes to finish

